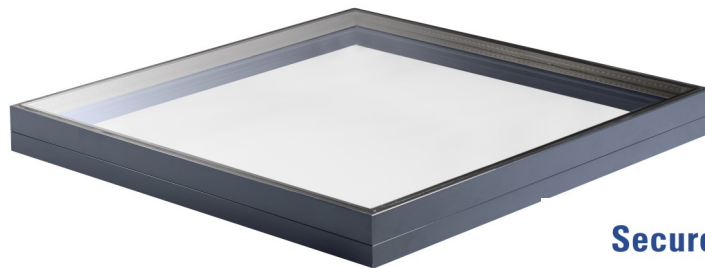




Installation Instructions and Maintenance Manual for: * Part Q FIXED Rooflight



Secured by Design



Official Police Security Initiative

Need help? Call us on 0116 2610 710



PART Q FIXED ROOFLIGHT OVERVIEW

Duplus Part Q fixed rooflights are glazed with an external pane of either 4mm or 6mm toughened glass (which is rooflight size dependant) with an internal pane of 8.8mm laminated glass. The 28.8mm double glazed units incorporating the latest Low E coating, warm edge spacer bar and argon filled cavity achieving a centre pane U-value of 1.1 W/m²K.

This product has been tested to LPS 2081 meeting security rating A.

For further clarification on any technical issues, please do not hesitate to contact Duplus.

Need help? Call us on 0116 2610 710



CONTENTS

1.0	Product Inspection	Page 4
2.0	Installation Hardware	Page 4
3.0	Kerb Suitability Check	Page 4
4.0	Installation	Page 5
5.0	Standard Glass Specification	Page 7
6.0	Glass Breakage	Page 8
7.0	General Cleaning & Maintenance	Page 8
8.0	Emergency Contact Information	Page 9
9.0	Drawings	Page 10

Need help? Call us on 0116 2610 710



1.0 Product Inspection

- 1.1 Upon receipt of your product firstly carry out an inspection of the packaging, if there are any signs of impact damage this should be reported to Duplus Architectural Systems (DAS) with suitable photographs within 24hrs of delivery. If no damage is found carefully remove the packaging, including the perimeter snap in cover clips (which must be retained) and fully inspect the product, again reporting any damage within 24hrs of delivery.
- 1.2 Do not use a knife when removing packaging; this may result in damage to the product.
- 1.3 Do not remove the wooden support feet until you have the rooflight next to the rooflight opening.
- 1.4 Do not attempt to carry the rooflight with the perimeter snap in cover clips in place.

2.0 Standard Installation Hardware

- 2.1 Plastic Horse Shoe packers in varying thicknesses, 5mm, 3mm, 2mm & 1mm.
- 2.2 50mm long stainless steel wood screws.

3.0 Kerb Suitability Check

- 3.1 A full inspection of the kerb should be undertaken before the installation begins. Please ensure there is sufficient unobstructed space around the immediate area, ensure all necessary safety systems are in place to enable safe working at height procedures. The kerbs should be surveyed to ensure dimensional accuracy. Please see accompanying drawings for details.

Please Note:

- 3.2 Water ponding is more likely to occur where our product has been fitted to a shallow sloping kerb or where the builders curb has no fall or slope. However, it is not a sign of any failure within our product. Water will pond where there is an insufficient fall to make it drain away naturally. Easy clean coatings can improve the situation as they tend to smooth out any surface imperfections of the glass.
- 3.3 Our fixed rooflights are designed to accommodate a 10 degree fall where water is less likely to pond.

Need help? Call us on 0116 2610 710



Important note.

- 3.4 Kerb must be fully weather tight before installation, external finishes should lap up and on to the top of the kerb before seating the SB Skylight in position. The top of the kerb should be flat with no pronounced level changes particularly at the corners.
- 3.5 To ensure water does not pond on the SB Skylight it is vital the kerb is built in accordance with the parameters set on drawings attached. Please note the kerb should always be formed as a flat annulus at the same pitch as the SB skylight.

4.0 Installation

Dry Run.

- 4.1 A dry run of the following installation guide is recommended to ensure the SB skylight fits on the kerb as expected and is in accordance with the tolerances specified on drawings attached.
- 4.2 Ensure all packaging is removed from the skylight including removing the wooden feet from the product and perimeter snap in cover clips. Lower the unit onto the kerb taking care to position it centrally, the vertical fixing leg should overhang the kerb by approximately 22mm from outside of kerb to outside of SB skylight - see drawings attached.
- 4.3 If you are satisfied the kerb is as expected and the correct tolerances are achieved you can prepare the kerb for the installation.

Rooflight Installation.

- 4.4 As before lower the unit on to the kerb taking care to position it centrally. Note: LIFT do not slide the rooflight as this may dislodge the foam tape and integral bubble gasket beneath the frame which could lead to potential weathering problems in the future. The vertical fixing leg should overhang the kerb by approximately 22mm from outside of kerb to outside of SB skylight - see drawings attached.
- 4.5 Now the unit is positioned correctly, fix the unit to the kerb using the supplied wood screws through the pre drilled holes, ensuring ALL pre drilled holes have a fixing and a suitable amount of supplied horseshoe packers are placed between the kerb and the aluminium skylight to avoid deformation of the aluminium profile and distortion of the frame when tightening.

Need help? Call us on 0116 2610 710



Important Note

- 4.6 If security screws are used, please be aware the wood screw cannot be easily removed, so ensure you have followed the above steps carefully before fixing the product to the kerb.
- 4.7 Now the unit is secured to the kerb the perimeter aluminium snap in cover clips which conceal the fixings can be applied, ensure the clip is positioned so that the mitre at the end of the clip lines through with the mitre on the frame of the unit. The top section should be engaged first then rotated down and clipped in place, a rubber mallet and clean timber cushioning block may be used to ensure sufficient engagement. Care should be taken to avoid distortion of the clip.

Need help? Call us on 0116 2610 710



5.0 Standard Glass Specification

Standard glass double glazed unit description (subject to rooflight design)

Outer Pane	4mm toughened
Cavity	16mm argon with warm edge spacer
Inner Pane	8.8mm low E coated laminated
Light transmission	79%
Solar Gain	0.62
Centre Pane U-value	1.1Wm ² K
Weight	30.8Kg/m ²

Outer Pane	6mm toughened
Cavity	14mm argon with warm edge spacer
Inner Pane	8.8mm low E coated laminated
Light transmission	78%
Solar Gain	0.61
Centre Pane U-value	1.1Wm ² K
Weight	35.8Kg/m ²

Need help? Call us on 0116 2610 710



6.0 Glass Breakage

- 6.1 Glass breakages are not covered under warranty. Should you experience a glass break please contact Duplus Architectural Systems Head office to order a replacement rooflight.

7.0 General Cleaning & Maintenance

- 7.1 The appearance, durability and performance of Duplus products, regardless of the material from which they are made, are always dependent on regular cleaning and maintenance. Cleaning therefore contributes considerably to the effective life of the system. All Duplus products should be cleaned regularly and at time intervals depending upon the accumulation of dirt. We should expect a minimum regime of 6 monthly clean and maintenance checks.
- 7.2 Those engaged on maintenance or cleaning work should use suitable equipment (see BS8213). Experienced operatives should be employed particularly in respect to rooflight/high level cleaning.
- 7.3 **Note under no circumstance should you attempt to walk on or load Duplus rooflight products regardless of their fragility status.**
- 7.4 The cleaning process is generally uncomplicated, consisting of washing down with warm water and mild detergent. Abrasive, caustic and chemical treatments are unnecessary, and may actually cause damage to the exposed surfaces of our products. A soft cloth or brush may be used to remove persistent contamination. However, care should be taken to avoid rubbing dirt into the system components. In the case of paint or bitumen splashes, white spirit applied with a soft cloth may be used with care, we would recommend a small area is tested first but do not allow white spirit to run onto unaffected areas. A final rinse with clean water will complete the process.
- 7.5 The product should be checked for movement on the kerb, if movement is found remove fixing snap in cover clip and check tightness of screws.

Important Note:

- 7.6 An annual review of perimeter silicone should be made to confirm that the perimeter seal between the glass and frame is intact. If the seal is not intact i.e., if this seal has been removed or degraded, the area should be cleaned and dried and re-sealed with Dow Corning 791 silicone sealant at the earliest opportunity. If water sits against the edge of a double glazed unit because the outer seal is no longer intact, Duplus will accept no responsibility of the glass unit breakdown as a result. Please be aware, although rare, it has been known for birds to peck away at silicone.
- 7.7 An annual review of the glass should be made and in the very rare event there appears to be any signs of glass movement, please contact Duplus at the earliest opportunity.

Need help? Call us on 0116 2610 710



8.0 Emergency Contact Information

Office Hours

Monday – Thursday: 8am – 12.45pm 1.30pm – 5pm

Friday: 8.30am – 1pm

Telephone

0116 2610710

Fax

0116 2610539

Email

sales@duplus.co.uk

Need help? Call us on 0116 2610 710